



Cat[®] CP12 GC

Padfoot Drum Vibratory Soil Compactor

The Cat[®] CP12 GC features a padfoot drum and is ideally suited for cohesive and semi-cohesive soil applications.

Superior Compaction Performance

- High weight at the drum and high amplitude deliver superior compaction performance.

Comfortable and Ergonomic Operator Station

- Simple controls are within reach.
- Outstanding visibility to the front and rear of the machine.

Proven and Exclusive Cat Features

- Includes the ultra-reliable pod-style vibratory system and sealed-for-life hitch bearing.

Reliable Cat Engine

- The Cat engine provides ample power and consistent performance.
- Standard Eco-mode reduces fuel use during normal operation.

Simple Maintenance

- Maintenance-free hitch bearings and extended maintenance intervals for vibratory system and hydraulic system provide more uptime and lower maintenance costs.

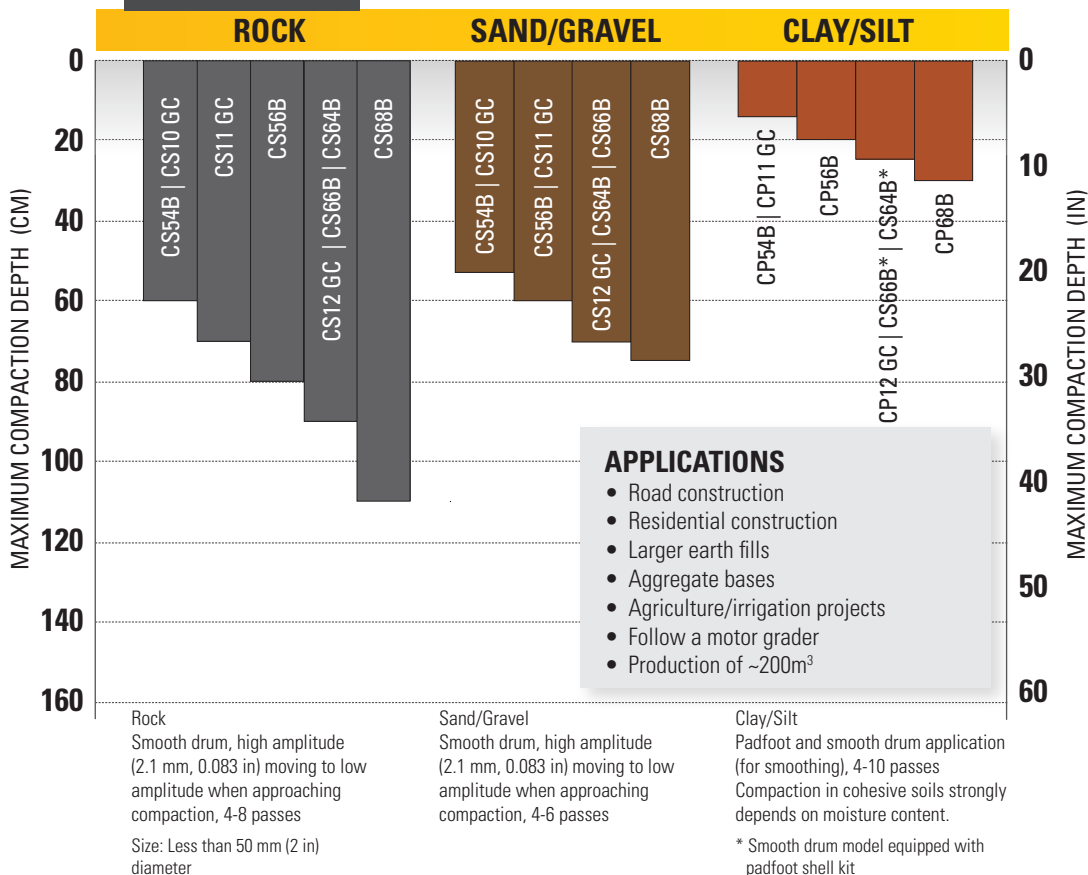
Optional Cat Compaction Control Technology

- Compaction control helps the operator determine when compaction has been completed to specification for greater productivity and uniform compaction quality.
- Scalable solutions can be configured to meet customer needs.

VIBRATORY SOIL COMPACTOR SELECTION GUIDE

10 - 15 T

Assumes density specification is 95% of Standard Proctor and can vary substantially due to different soil conditions.



Cat® CP12 GC Padfoot Drum Vibratory Soil Compactor

Technical Specifications

Engine - Power Train		
Engine Model	Cat C3.6	
Global Emissions	US EPA Tier 4 Final EU Stage V	
Gross Power ISO 14396	90.0 kW	121.0 hp
Gross Power SAE J1995	91.7 kW	123.0 hp
Net Power ISO 9249*	83.7 kW	112.2 hp
Net Power SAE J1349*	82.9 kW	111.2 hp
Displacement	3.6 L	219.7 in ³
Stroke	120 mm	4.7 in
Bore	98 mm	3.9 in
Max. Travel Speed (Forward or Reverse)	11 km/h	6.84 mph
Theoretical Gradeability, with or without vibration**	50%	

Weights		
Operating Weight w/ ROPS/FOPS canopy	12 433kg	27,410 lb
Operating Weight w/ ROPS/FOPS cab	12 596 kg	27,769 lb
Weight at Drum w/ ROPS/FOPS canopy	7588 kg	16,729 lb
Weight at Drum w/ ROPS/FOPS cab	7635 kg	16,832 lb

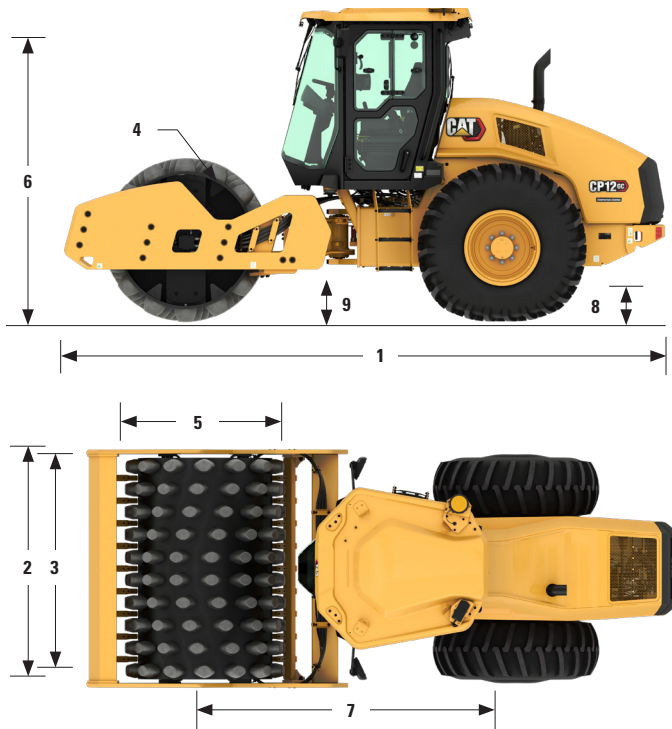
* Net power advertised is the power available at the engine flywheel when equipped with a fan at maximum speed, air cleaner, clean emissions module, and alternator.

** Actual gradeability may vary based on site conditions and machine configuration. Refer to the Operation and Maintenance Manual for more information.

Vibratory System Specifications		
Nominal Amplitude - High	1.8 mm	0.071 in
Frequency at High Idle	30.0 Hz	1800 vpm
Frequency at Eco-Mode	28.6 Hz	1716 vpm
Nominal Amplitude - Low	0.89 mm	0.035 in
Frequency at High Idle	33 Hz	1980 vpm
Frequency at Eco-Mode	31.5 Hz	1890 vpm
Centrifugal Force		
Maximum	249 kN	55,932 lb
Minimum	148 kN	33,249 lb
French Classification, data/class w/ ROPS/FOPS cab	48.0	VM3

Service Refill Capacities		
Fuel Tank, total capacity	213 L	56.3 gal
Diesel Exhaust Fuel Refill Capacity	19 L	5.0 gal
Cooling System	18.5 L	4.9 gal
Engine Oil w/ Filter	11.6 L	3.1 gal
Eccentric Weight Housings (combined)	26 L	6.9 gal
Axle and Final Drives	10 L	2.6 gal
Hydraulic Tank (service refill)	23 L	6.1 gal

Cat® CP12 GC Padfoot Drum Vibratory Soil Compactor



Dimensions

1	Overall Length	5.70 m	18.71 ft
2	Overall Width	2.30 m	7.53 ft
3	Drum Width	2134 mm	84 in
4	Drum Shell Thickness	25 mm	0.98 in
5	Drum Diameter (over pads)	1549 mm	60.9 in
6	Overall Height	3.0 m	9.8 ft
7	Wheelbase	3.0 m	9.8 ft
8	Ground Clearance	516 mm	20.3 in
9	Curb Clearance	496 mm	19.5 in
	Inside Turning Radius	3.86 m	12.7 ft
	Hitch Articulation Angle	34°	
	Hitch Oscillation Angle	15°	

Padfoot Specifications

Number of Pads	140	
Pad Height, oval pads	127 mm	5.0 in
Pad Face Area, oval pads	74.4 cm ²	11.5 in ²
Pad Height, optional square pads	100 mm	3.9 in
Pad Face Area, optional square pads	123 cm ²	19.1 in ²
Number of Chevrons	14	

Cat® CP12 GC Padfoot Drum Vibratory Soil Compactor

Standard and Optional Equipment

Standard and optional equipment may vary. Consult your Cat dealer for details.

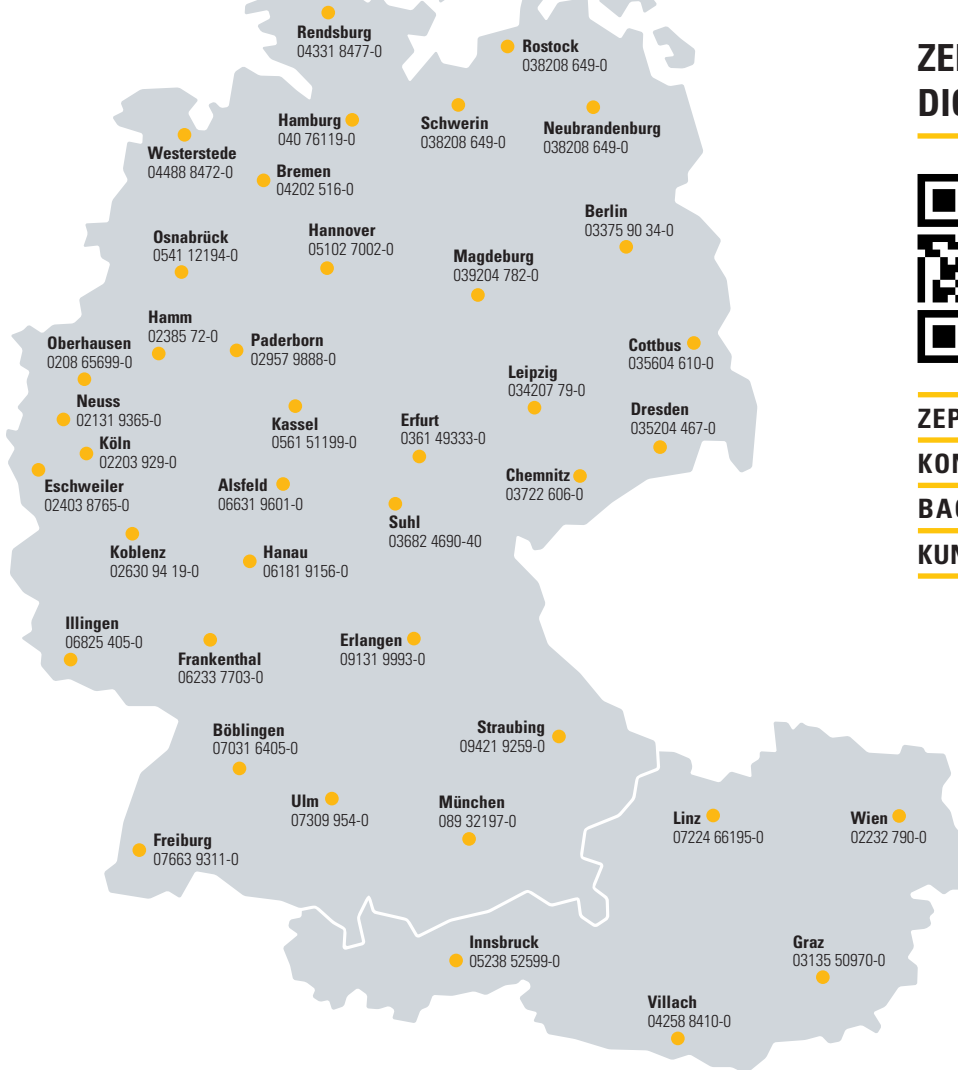
	Standard	Optional		Standard	Optional
OPERATOR ENVIRONMENT			POWER TRAIN		
ROPS/FOPS Canopy with Handrails/Guardrails, Floor Mat	✓		Cat C3.6 Diesel Engine, 4 cylinder	✓	
Vinyl Adjustable Seat, Seat Belt	✓		Single Propel Pump	✓	
Adjustable Tilting Steering Column	✓		Fuel Filter, Water Separator, Priming Pump, Water Indicator	✓	
12-volt Power Outlet	✓		Radiator/Hydraulic Oil Cooler	✓	
Horn, Backup Alarm	✓		Dual Braking System	✓	
Internal Rear View Mirror	✓		Two-speed Hydrostatic Transmission	✓	
ROPS/FOPS Cab with Climate Control		✓	Transmission Guard		✓
Deluxe High-back Air-ride seat (Cab)		✓	TECHNOLOGY SOLUTIONS		
Sun/Debris Shields (Canopy)		✓	Measure - Machine Drive Power		✓
Cab Internal Roll-down Sun Screen (Cab)		✓	Map - SBAS GNSS Mapping		✓
Rear View Camera with Color Touchscreen Display		✓	Connect - Cloud and Machine Connectivity		✓
Sound Reduction Kit		✓	ELECTRICAL		
VIBRATORY SYSTEM			12 volt Electrical System	✓	
Padfoot Drum	✓		150 ampere Alternator	✓	
Dual Amplitude, Dual Frequency	✓		900 Cold-cranking Amps Battery Capacity	✓	
Pod-Style Eccentric Weight Housings	✓		OTHER		
Auto-vibe Function	✓		Product Link™	✓	
			Sight Gauges for Hydraulic Oil Level and Radiator Coolant Level	✓	
			S-O-S SM Sampling Valves: Engine Oil, Hydraulic Oil and Coolant	✓	
			Upgraded LED Light Package		✓
			Amber Rotating Beacon		✓

ZEPPELIN

ZEPPELIN – GANZ IN IHRER NÄHE

ZEPPELIN IN IHRER NÄHE

Mit unseren rund 40 Niederlassungen in Deutschland und Österreich sind wir immer in der Nähe Ihres Standortes oder Ihrer Baustelle. Der Zeppelin Service steht Ihnen rund um die Uhr zur Verfügung. Wir liefern 98 % aller Ersatzteile innerhalb von 24 Stunden.



ZEPPELIN DIGITAL



- [ZEPPELIN SHOP](#)
- [KONFIGURATOR](#)
- [BAGGERBÖRSE](#)
- [KUNDENPORTAL](#)



Günstige Finanzierungen
für alle unsere Maschinen
über unseren
Partner Cat Financial.

**Schnell. Einfach. Flexibel.
Individuell.**

Zeppelin Baumaschinen GmbH
Graf-Zeppelin-Platz 1 · 85748 Garching bei München
Tel. 089 32000-0 · zeppelin-cat@zeppelin.com
zeppelin-cat.de

Zeppelin Österreich GmbH
Zeppelinstraße 2 · 2401 Fischamend bei Wien
Tel. 02232 790-0 · info.at@zeppelin.com
zeppelin-cat.at

For more complete information on Cat products, dealer services, and industry solutions, visit us on the web at www.cat.com

© 2020 Caterpillar
All rights reserved

Materials and specifications are subject to change without notice. Featured machines in photos may include additional equipment.
See your Cat dealer for available options.

CAT, CATERPILLAR, LET'S DO THE WORK, their respective logos, "Caterpillar Corporate Yellow," the "Power Edge" and Cat "Modern Hex" trade dress as well as corporate and product identity used herein, are trademarks of Caterpillar and may not be used without permission.

VisionLink is a trademark of Trimble Navigation Limited, registered in the United States and in other countries.

QEHQ2771 (10-2020)

