

Industrial Engine Ratings Guide

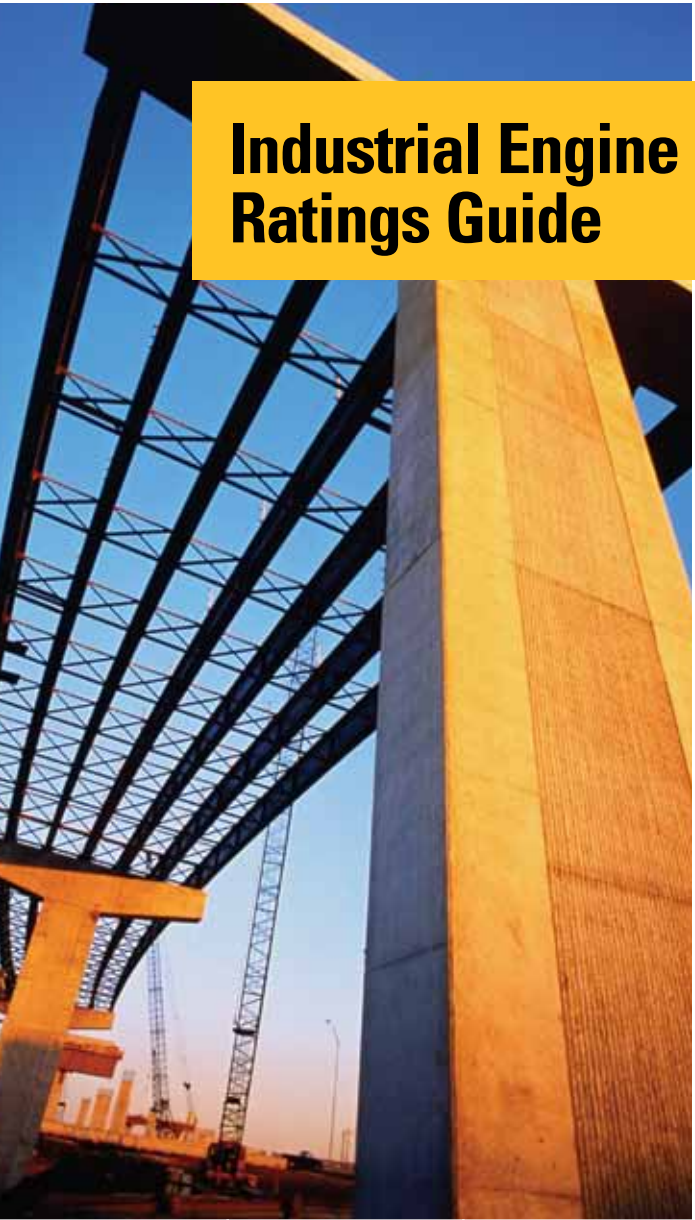


Table of Contents

Diesel Engine Rating Definitions	2
Rating Conditions	2
ISO 9001:2000 Certification	2
Rating Power Ranges	3
EPA & EU Non-Road Emissions Regulations	3
EPA Stationary Regulations	3
Engine Listing by Emissions Tiers	4
Abbreviations	4
Diesel Engines	
C0.5, C0.7	5
C1.1, C1.1 Power Unit, C1.5, C1.5 Power Unit	6
C1.6, C1.7	7
C2.2, C2.2 Power Unit, C3.4	8
C4.4, C4.4 Power Unit	9
C4.4 ACERT™, C4.4 ACERT Power Unit	10
C6.6 ACERT, C6.6 ACERT Power Unit	11
C7 ACERT, C7 ACERT Power Unit	12
C7.1	13
C9 ACERT, C9 ACERT Power Unit	14
C11 ACERT, C11 ACERT Power Unit	15
C13 ACERT, C13 ACERT Power Unit	16
C15 ACERT, C15 ACERT Power Unit	17
C18 ACERT, C18 ACERT Power Unit	18
C27 ACERT, C32 ACERT	19
3406C	20
3500	21
3500B	22
3600	23
Fire Pumps	
C18 ACERT	24
3406C	25
3412C Wet Manifold	25
3508, 3512, 3516	25
Gas Engines	
Label and NSPS Regulations	26
G3300	27
G3400	28
G3500	29
G3600	30
Technology	
ACERT Technology	31
ADEM™ A4 ECU	31
Analog Gauge	31
Cat® Messenger	31
Additional Literature	32

Diesel Engine Rating Definitions

Explanation of Ratings A, B, C, D, and E:

For an exact determination of the appropriate rating, contact your local Cat dealer. Engine rating obtained and presented in accordance with ISO3046/1.

IND-A (Continuous)

Continuous heavy-duty service where the engine is operated at maximum power and speed up to 100% of the time without interruption or load cycling.

IND-B

For service where power and/or speed are cyclic (time at full load not to exceed 80%).

IND-C (Intermittent)

Intermittent service where maximum power and/or speed are cyclic (time at full load not to exceed 50%).

IND-D

For service where maximum power is required for periodic overloads (time at full load not to exceed 10% of the duty cycle).

IND-E

For service where maximum power is required for a short time for initial starting or sudden overload. For emergency service where standard power is unavailable (time at full load not to exceed 5% of the duty cycle).

Rating Conditions

Diesel Engines — up to 6.6 liter

All rating conditions are based on ISO/TR14396, inlet air standard conditions with a total barometric pressure of 100 kPa (29.5 in Hg), with a vapor pressure of 1 kPa (.295 in Hg), and 25°C (77°F). Performance measured using fuel to specification EPA 2D 89.330-96 with a density of 0.845-0.850 kg/L @ 15°C (59°F) and fuel inlet temperature 40°C (104°F).

Diesel Engines — 7 liter and higher

All rating conditions are based on SAE J1995, inlet air standard conditions of 99 kPa (29.31 in Hg) dry barometer and 25°C (77°F) temperature. Performance measured using a standard fuel with fuel gravity of 35° API having a lower heating value of 42,780 kJ/kg (18,390 btu/lb) when used at 29°C (84.2°F) with a density of 838.9 g/L.

Gas Engines

Ratings are based on SAE J1349 standard conditions of 100 kPa (29.61 in Hg) and 25°C (77°F). These ratings also apply at ISO3046, DIN6271, and BS5514 standard conditions of 100 kPa (29.61 in Hg) and 27°C (81°F); and API 7B-11C standard conditions of 99 kPa (29.28 in Hg) and 29°C (85°F) also apply.

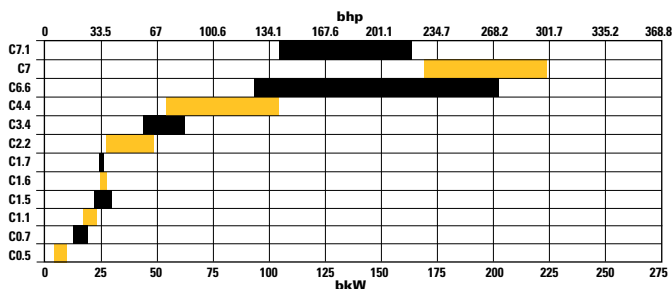
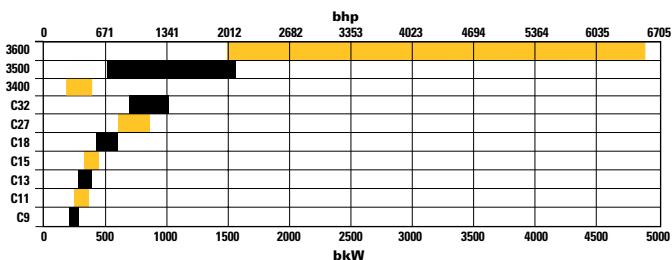
Ratings are based on dry natural gas having an LHV of 35.54 MJ/N·m³ (905 btu/ft³). Variations in altitude, temperature, and gas composition from standard conditions may require a reduction in engine horsepower.

Turbocharged-Aftercooled ratings apply to 1525 m (5000 ft) and 25°C (77°F).

ISO 9001:2000 Certification

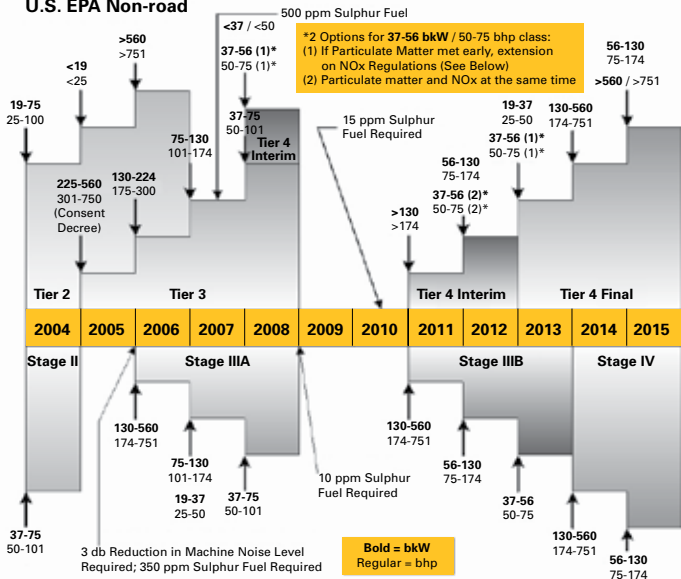
Factory-designed systems built at Caterpillar ISO 9001:2000 certified facilities.

Match a Reliable Cat® Engine to Your Application



EPA & EU NON-ROAD EMISSIONS REGULATIONS

U.S. EPA Non-road



European Non-road

EPA Stationary Regulations

For important information related to the New Source Performance Standard (NSPS) for diesel stationary engines, refer to the EPA web site at www.epa.gov.

Engine Listing by Emissions Tiers

Tier 4, Stage IIIA

C0.5, C0.7
C1.1, C1.5
C1.6, C1.7
C2.2, C3.4

Tier 3, Stage IIIA

C3.4
C4.4 (T, TA)
C4.4 ACERT™
C6.6 ACERT
C7 ACERT
C9 ACERT
C11 ACERT
C13 ACERT
C15 ACERT
C18 ACERT (A, B, and C ratings)

Stage IIIA

C4.4 (NA)

Tier 2

C18 ACERT (D and E ratings)
C27 ACERT, C32 ACERT

Tier 1

3406C, 3508B, 3512B, 3516B

Non-Certified

3508, 3512, 3516

Abbreviations

NA	Naturally Aspirated
T	Turbocharged
TA	Turbocharged-Aftercooled
TTA	Twin Turbo Aftercooled
PC	Precombustion Chamber
ATAAC	Air-to-Air Aftercooled
bhp	brake horsepower
bkW	brake kilowatts
LE	Low Emission
JWAC	Jacket Water Aftercooled
SCAC	Separate Circuit Aftercooled
E	Electronic
STD	Standard (stoichiometric) engine highest power rating
CAT	standard (stoichiometric) engine Catalyst rating
ECU	Electronic Control Unit
FIE	Fuel Injection Equipment
NSPS	New Source Performance Standard
SI	Spark Ignited
SI NSPS	Spark Ignited New Source Performance Standard



C0.5

Specifications

	C0.5	C0.7
Bore x Stroke	67 x 72 mm (2.6 x 2.8 in)	67 x 72 mm (2.6 x 2.8 in)
Displacement	0.5 liters (31 in ³)	0.76 liters (46.4 in ³)
Ship Weight (NA)	57 kg (126 lbs)	71 kg (156.5 lbs)
Approximate Dimensions:		
Length	407 mm (16.00 in)	480 mm (18.9 in)
Width	371 mm (14.60 in)	371 mm (14.6 in)
Height	523 mm (20.60 in)	528 mm (20.8 in)

C0.5 Ratings In-Line 2

NA	C Rating (Intermittent)		
	bkW	bhp	rpm
	8.2	11.0	2800
	8.8	11.8	3000
	10.2	13.7	3600

C0.7 Ratings In-Line 3

NA	C Rating (Intermittent)		
	bkW	bhp	rpm
	12.2	16.4	2800
	13.2	17.7	3000
	15.3	20.5	3600

Benefits

- Increase of horsepower and torque capabilities by 10%
- 500-hour service intervals
- Single-side servicing

Abbreviations used:

NA.....Naturally Aspirated

Unless noted, ratings conform with EPA (U.S.) Tier 4 Interim emission standards.

C1.1



Specifications

	C1.1	C1.5
Bore x Stroke	77 x 81 mm (3.0 x 3.2 in)	84 x 90 mm (3.3 x 3.5 in)
Displacement	1.1 liters (69 in ³)	1.496 liters (91 in ³)
Ship Weight (NA)	87 kg (191 lbs)	149 kg (328 lbs) (NA) 156.5 kg (345 lbs) (T)
Approximate Dimensions:		
Length	491 mm (19.33 in)	572 mm (22.50 in) (NA, T)
Width	400 mm (15.7 in)	453 mm (17.8 in) (NA) 512 mm (20.2 in) (T)
Height	576 mm (22.7 in)	643 mm (25.30 in) (NA, T)

C1.1 Ratings In-Line 3

NA	C Rating (Intermittent)		
	bkW Std/Derate	bhp Std/Derate	rpm
	14.7 / 13.7	19.7 / 18.4	2200*
	17.3 / 16.1	23.2 / 21.6	2600*
	18.5 / 16.8	24.8 / 22.6	2800*
	19.7 / 17.7	26.4 / 23.7	3000
	21.0	28.2	3400

C1.1 Power Unit Ratings In-Line 3

NA	C Rating (Intermittent)		
	bkW	bhp	rpm
	17.9	24	3000

C1.5 Ratings In-Line 3

NA	C Rating (Intermittent)		
	bkW	bhp	rpm
	20.9	28	2200
	22.3	29.9	2400
	23.4	31.4	2600
	24.4	32.7	2800
	25.1	33.7	3000
T			
	23.1	31	2200
	25.2	33.8	2400
	27.3	36.6	2600
	29.4	39.4	2800
	30.0	40.2	3000

C1.5 Power Unit Ratings In-Line 3

NA	C Rating (Intermittent)		
	bkW	bhp	rpm
	24.2	32.5	3000

Benefits

- Increase of horsepower and torque capabilities by 10%
- 500-hour service intervals
- Single-side servicing

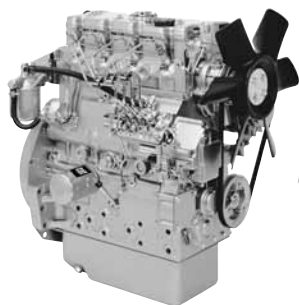
Abbreviations used:

NA.....Naturally Aspirated

T.....Turbocharged

Unless noted, ratings conform with EPA (U.S.) Tier 4 Interim, EU Stage IIIA emission standards.

*Rating conforms with EPA (U.S.) Tier 4 Interim emission standards.



C1.6

Specifications

	C1.6	C1.7
Bore x Stroke	77 x 81 mm (3.0 x 3.2 in)	84 x 100 mm (3.3 x 3.9 in)
Displacement	1.5 liters (92 in ³)	1.66 liters (101 in ³)
Ship Weight (NA)	106.8 kg (235.5 lbs)	160 kg (352.7 lbs)
Approximate Dimensions:		
Length	591 mm (23.30 in)	564 mm (22.2 in)
Width	420 mm (16.5 in)	453 mm (17.8 in)
Height	576 mm (22.70 in)	654 mm (25.7 in)

C1.6 Ratings In-Line 4

NA	C Rating (Intermittent)		
	bkW	bhp	rpm
	24.6	33.0	2800
	26.5	35.5	3000

C1.7 Ratings In-Line 3

NA	C Rating (Intermittent)		
	bkW	bhp	rpm
	23.6	31.6	2400
	26.1	35.0	2600

Benefits

- Increase of horsepower and torque capabilities by 10%
- 500-hour service intervals
- Single-side servicing

Abbreviations used:

NA.....Naturally Aspirated

Unless noted, ratings conform with EPA (U.S.) Tier 4 Interim, EU Stage IIIA emission standards.

C3.4



Specifications

	C2.2	C3.4
Bore x Stroke	84 x 100 mm (3.3 x 3.9 in)	94 x 120 mm (3.7 x 4.72 in)
Displacement	2.2 liters (135 in ³)	3.3 liters (201 in ³)
Ship Weight (NA)	184 kg (406 lbs) (NA)	245 kg (540 lbs) (NA)
	194 kg (427.7 lbs) (T, TA)	265 kg (584 lbs) (T)
Approximate Dimensions:		
Length	664 mm (26.14 in) (NA)	781 mm (30.70 in) (NA)
	660 mm (26.0 in) (T, TA)	784 mm (30.9 in) (T)
Width	459 mm (18.1 in) (NA)	590 mm (23.2 in) High Turbo
	531 mm (21.0 in) (T, TA)	649 mm (25.5 in) Low Turbo
Height	725 mm (28.5 in) (NA, T, TA)	722 mm (28.40 in) (NA)

C2.2 Ratings In-Line 4

C Rating (Intermittent)			
	bkW	bhp	rpm
NA	Std/Derate	Std/Derate	
	31.0	41.6	2200
	34.1	45.7	2400
	35.7 / 31.4	47.9 / 42.1	2600
	37.3 / 32.8	50.0 / 43.9	2800
	38.0 / 34.0	51.0 / 45.6	3000
T			
	40 / 36.3	53.3 / 48.7	2800
	43	57.7	2600
	44.7	60.0	2800
	45.5	61.0	3000
TA (ATAAC)			
	49.3	66.1	2800

C2.2 Power Unit Ratings In-Line 4

C Rating (Intermittent)			
	bkW	bhp	rpm
NA	37	49.6	3000
T	41.7	55.9	2800

C3.4 Ratings In-Line 4

C Rating (Intermittent)			
	bkW	bhp	rpm
NA	47	63	2500
T	55	73.7	2500
	62	83	2500*

Benefits

- Increase of horsepower and torque capabilities by 10%
- 500-hour service intervals
- Single-side servicing

Abbreviations used:

ATAAC.....Air-to-Air Aftercooled

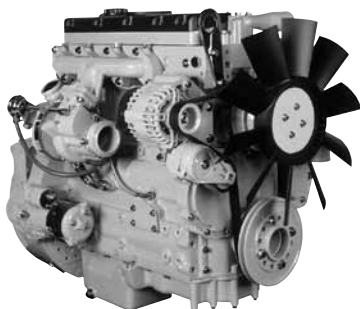
NA.....Naturally Aspirated

T.....Turbocharged

TA.....Turbocharged-Aftercooled

Unless noted, ratings conform with EPA (U.S.) Tier 4 Interim, EU Stage IIIA emission standards.

*Rating conforms with EPA (U.S.) Tier 3, EU Stage IIIA emission standards.



C4.4

Specifications

	C4.4
Bore x Stroke	105 x 127 mm (4.1 x 5.0 in)
Displacement	4.4 liters (269 in ³)
Ship Weight	291 kg (640 lbs) (NA)
	306 kg (674.6 lbs) (T, TA)

Approximate Dimensions:

Length	663 mm (26.1 in) (NA, T, TA)
Width	470 mm (18.5 in) (NA)
	597 mm (23.5 in) (T)
	620 mm (24.4 in) (TA)
Height	810 mm (31.9 in) (NA, T)
	775 mm (30.5 in) (TA)

C4.4 Ratings In-Line 4

C Rating (Intermittent)			C Rating (Intermittent)			C Rating (Intermittent)		
bkW	bhp	rpm	bkW	bhp	rpm	bkW	bhp	rpm
NA			T			TA (ATAAC)		
54	72	2200*	55.5-74.5	74.4-99.9	2200-	68-83	91.2-111.3	2200-
55.9	75	2200*			2400			2400

C4.4 Power Unit Ratings In-Line 4

C Rating (Intermittent)			C Rating (Intermittent)		
bkW	bhp	rpm	bkW	bhp	rpm
NA			TA (ATAAC)		
66	88.5	2200*	74	99.2	2200

Features

- Mechanical control
- Identical major hook-up points
- New options including multi-vee belt
- Auxiliary drive capability — SAE A PTO, SAE B PTO

Benefits

- Choice of naturally aspirated, turbocharged, and turbocharged-aftercooled models
- Minimum impact to engine bay installation
- Installation and noise suppression costs reduced
- Maintained fuel economy
- Improved power and torque matching
- Faster diagnostics

Abbreviations used:

ATAACAir-to-Air Aftercooled	TTurbocharged
NANaturally Aspirated	TATurbocharged-Aftercooled

Unless noted, ratings conform with EPA (U.S.) Tier 3, EU Stage IIIA emission standards.

*Rating conforms with EU Stage IIIA emission standards only.

C4.4 ACERT



Specification

C4.4 ACERT	
Bore x Stroke	105 x 127 mm (4.1 x 5.0 in)
Displacement	4.4 liters (269 in ³)
Ship Weight	360 kg (793.7 lbs) (T, TA)
Approximate Dimensions:	
Length	631 mm (24.8 in) (T, TA)
Width	626 mm (24.65 in) (T, TA)
Height	823.5 mm (32.4 in) (T) 958 mm (37.72 in) (TA)

C4.4 ACERT Ratings In-Line 4

	C Rating (Intermittent)			C Rating (Intermittent)		
	bkW	bhp	rpm	bkW	bhp	rpm
T	61.5-74.5	82.5-99	2200	TA (ATAAC)		
				74.5-106	99.5-142	2200

C4.4 ACERT Power Unit Ratings

In-Line 4

	C Rating (Intermittent)		
	bkW	bhp	rpm
TA (ATAAC)	100.2	134.4	2200

Features

- Electronic control
- Identical major hook-up points
- New options including multi-vee belt
- Auxiliary drive capability — SAE A PTO, SAE B PTO

Benefits

- Choice of naturally aspirated, turbocharged, and Turbocharged-Aftercooled models
- Minimum impact to engine bay installation
- Installation and noise suppression costs reduced
- Maintained fuel economy
- Improved power and torque matching
- Faster diagnostics

Abbreviations used:

ATAAC.....Air-to-Air Aftercooled

TA.....Turbocharged-Aftercooled

T.....Turbocharged

Unless noted, ratings conform with EPA (U.S.) Tier 3, EU Stage IIIA emission standards.



C6.6 ACERT

Specifications

	C6.6 ACERT	C6.6 ACERT Power Unit
Bore x Stroke	105 x 127 mm (4.1 x 5.0 in)	105 x 127 mm (4.1 x 5.0 in)
Displacement	6.6 liters (402.8 in ³)	6.6 liters (402.8 in ³)
Ship Weight (TA) . .	506 kg (1116 lbs)	709 kg (1563 lbs)
Approximate Dimensions:		
Length	929 mm (36.6 in)	1708* mm (67.23* in)
Width	668 mm (26.3 in)	767 mm (30.2 in)
Height	797 mm (31.4 in)	1144 mm (45.0 in)

C6.6 ACERT Ratings

In-Line 6

TA (ATAAC)	C Rating (Intermittent)	
	bkW	bhp
		rpm
89	119.4	2200
95	128	2200
116.5	156.2	2200
129	173.0	2500
129.5	173.7	2200
130	174.3	2500
136	182.4	2200
140	187.7	2200
144	193.1	2200
146	195.8	2200
151	202.5	1800
151	202.5	2200
158.5	212.6	2200
159	213.2	2200
168	225.3	2200
176.5	236.7	2200**
186	249.4	2200
205	274.9	2200**

C6.6 ACERT Power Unit Ratings

In-Line 6

TA (ATAAC)	C Rating (Intermittent)	
	bkW	bhp
		rpm
129.5	173.7	2200
130	174.3	2500
151	202.5	1800
151	202.5	2200
168	225.3	2200

Features

- ADEM™ A4 ECU
- Cat Common Rail Fuel System
- Oil lubricated fuel pump
- 4-valve cross flow cylinder head
- Integrated fuel lift pump
- Auxiliary drive capability —
SAE A PTO
SAE B PTO

Abbreviations used:

ATAAC Air-to-Air Aftercooled
ECU Electronic Control Unit

Benefits

- Insulated timing cover, valve cover, and isolated oil pan reduce noise up to 3-5 dBa
- Multi-V belt reduces maintenance and belt wear
- Outstanding cold start capability to -25°F/-32°C using glow plugs
- Either side servicing
- Power Unit options include 12V or 24V alternator, pusher or puller fan, and air compressor.

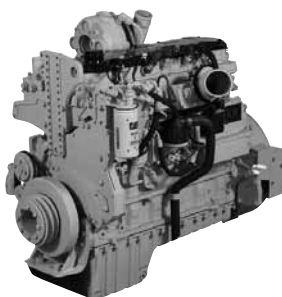
TA Turbocharged-Aftercooled

Unless noted, ratings conform with EPA (U.S.) Tier 3, EU Stage IIIA emission standards for ratings up to 130 bkW (175 bhp). Above 130 bkW (175 bhp) ratings available using EPA (U.S.) Flexibility and EU Flexibility, and for other regulated and non-regulated areas.

*Includes fitted air cleaner

**Specific Application

C7 ACERT



Specifications

C7 ACERT

Bore x Stroke 110 x 127 mm (4.33 x 5.0 in)
Displacement 7.2 liters (442 in³)
Ship Weight 588 kg (1296 lbs)

Approximate Dimensions:

Length 1053 mm (41.5 in)
Width 758 mm (29.8 in)
Height 1032 mm (40.6 in)

C7 ACERT Ratings In-Line 6

B Rating			C Rating (Intermittent)			D Rating		
bkW	bhp	rpm	bkW	bhp	rpm	bkW	bhp	rpm
TA (ATAAC)								
168	225	1800-	186	250	1800-	224	300	2100-
		2200			2200			2200
—	—	—	205	275	1800-	—	—	—
					2200			

C7 ACERT Power Unit Ratings

In-Line 6

B Rating			C Rating (Intermittent)			D Rating		
bkW	bhp	rpm	bkW	bhp	rpm	bkW	bhp	rpm
TA (ATAAC)								
168	225	1800-	186	250	1800-	—	—	—
		2200			2200			
—	—	—	205	275	1800-	—	—	—
					2200			

Features

- ADEM™ A4 ECU
- HEUI™ fuel system
- Enhanced cylinder block
- Mono steel piston
- Side cover breather

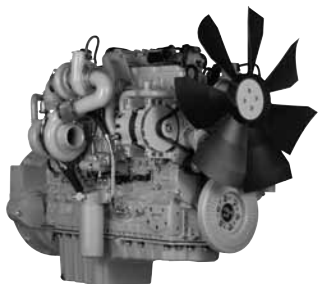
Benefits

- Wastegated turbocharger optimizes airflow
- Cleaner combustion process
- Lightweight block design
- Easy installation in OEM equipment
- Improved joints reduce oil and coolant loss from engine

Abbreviations used:

ATAAC.....Air-to-Air Aftercooled **TA**..... Turbocharged-Aftercooled
ECU.....Electronic Control Unit

Available using EPA (U.S.) Flexibility and EU Flexibility, and for other regulated and non-regulated areas.



C7.1

Specifications

	C7.1
Bore x Stroke	105 x 135 mm (4.13 x 5.3 in)
Displacement	7.01 liters (427.7 in ³)
Ship Weight	506 kg (1115 lbs)

Approximate Dimensions:

Length	929 mm (35.5 in)
Width	668 mm (26.2 in)
Height	797 mm (31.4 in)

C7.1 Ratings In-Line 6

	C Rating (Intermittent)		
	bkW	bhp	rpm
T	105	140	2200
TA	115	154	2200
	129	172	2200
	137	183	2200
	145	194	2200
	162	220	2200

Features

- New SAE B PTO
- Developed to be World Fuel Capable, including the use of 20% bio fuel
- Improvements to the manifold, combustion area, and turbocharger geometry
- Increased cylinder displacement
- Mechanical control

Benefits

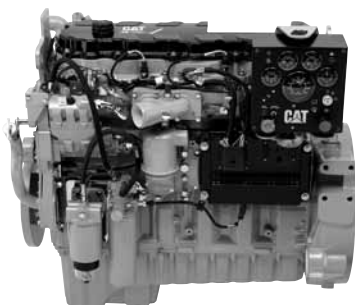
- Built to provide exact power solutions for customers who sell their applications into lesser regulated countries
- Considerable increases in delivered power, torque, and quiet operation
- Platform commonality for easier changeover and lower cost

Abbreviations used:

- T** Turbocharged
- TA** Turbocharged-Aftercooled

Designed to conform with China Stage II emission standards, and other global regulated and non-regulated areas.

C9 ACERT



Specifications

C9 ACERT	
Bore x Stroke	112 x 149 mm (4.41 x 5.87 in)
Displacement	8.8 liters (537 in ³)
Ship Weight	864 kg (1905 lbs)
Approximate Dimensions:	
Length	1091 mm (43 in)
Width	827 mm (32.6 in)
Height	1023 mm (40.3 in)

C9 ACERT Ratings In-Line 6

A Rating (Continuous)			B Rating			C Rating (Intermittent)			D Rating		
bkW	bhp	rpm	bkW	bhp	rpm	bkW	bhp	rpm	bkW	bhp	rpm
TA (ATAAC)											
205	275	1800-2200	223	300	1800-2200	242	325	1800-2200	280	375	1800-2200
—	—	—	—	—	—	261	350	1800-2200	—	—	—

C9 ACERT Power Unit Ratings In-Line 6

A Rating (Continuous)			B Rating			C Rating (Intermittent)			D Rating		
bkW	bhp	rpm	bkW	bhp	rpm	bkW	bhp	rpm	bkW	bhp	rpm
TA (ATAAC)											
205	275	1800-2200	223	300	1800-2200	242	325	1800-2200	—	—	—
—	—	—	—	—	—	261	350	1800-2200	—	—	—

Features

- ADEM™ A4 ECU
- HEUI™ fuel system
- High efficiency oil filters
- Fractured split connecting rod
- Lightweight cylinder block
- Wastegated turbocharger

Benefits

- Mid-supported wet liner allows better fuel consumption and reduced emissions
- Extended life with induction-hardened internal surface
- Optimized fuel injector control
- New oil filter reconfigured to reduce wear on engine

Abbreviations used:

ATAAC.....Air-to-Air Aftercooled

TA Turbocharged-Aftercooled

ECU.....Electronic Control Unit

Available using EPA (U.S.) Flexibility and EU Flexibility, and for other global regulated and non-regulated areas.



C11 ACERT

Specifications

C11 ACERT	
Bore x Stroke	130 x 140 mm (5.12 x 5.51 in)
Displacement	11.1 liters (677 in ³)
Ship Weight	930 kg (2050 lbs)
Approximate Dimensions:	
Length	1203 mm (47.4 in)
Width	1054 mm (41.5 in)
Height	1186 mm (46.7 in)

C11 ACERT Ratings In-Line 6

A Rating (Continuous)		B Rating			C Rating (Intermittent)			D Rating			E Rating			
bkW	bhp	rpm	bkW	bhp	rpm	bkW	bhp	rpm	bkW	bhp	rpm	bkW	bhp	rpm
TA (ATAAC)														
242	325	1800-	261	350	1800-	287	385	1800-	313	420	1800-	336	450	1800-
		2100			2100			2100			2100			2100

C11 ACERT Power Unit Ratings In-Line 6

A Rating (Continuous)			B Rating			C Rating (Intermittent)		
bkW	bhp	rpm	bkW	bhp	rpm	bkW	bhp	rpm
TA (ATAAC)								
242	325	1800-	261	350	1800-	287	385	1800-
		2100			2100			2100

Features

- ADEM™ A4 ECU
- MEUI fuel system
- Single-piece cross flow cylinder head
- High pressure fuel system
- Mono steel piston
- Leak-free technology
- Single/dual rear PTO
- Multi-layer steel head gaskets

Benefits

- Gear train is redesigned with increased capacity and decreasing noise volume
- Option of laminated front housing significantly diminishes decibel output
- Oil pan isolation reduces noise volume
- Multi-layered steel hard gasket improves durability
- Steel spacer between two layers of spring steel increases gasket resilience
- Gasket resilience increases engine life by decreasing leakage
- New highly efficient oil filter reduces engine wear and enhances contamination control

Abbreviations used:

ATAAC.....Air-to-Air Aftercooled
ECU.....Electronic Control Unit

TA.....Turbocharged-Aftercooled

Available using EPA (U.S.) Flexibility and EU Flexibility, and for other global regulated and non-regulated areas.

C13 ACERT



Specifications

	C13 ACERT
Bore x Stroke	130 x 157 mm (5.1 x 6.2 in)
Displacement	12.5 liters (763 in ³)
Ship Weight	1149 kg (2533 lbs)
Approximate Dimensions:	
Length	1203 mm (47.4 in)
Width	1011 mm (39.8 in)
Height	1186 mm (46.7 in)

C13 ACERT Ratings In-Line 6

TA (ATAAC)	A Rating (Continuous)			B Rating			C Rating (Intermittent)			D Rating			E Rating		
	bkW	bhp	rpm	bkW	bhp	rpm	bkW	bhp	rpm	bkW	bhp	rpm	bkW	bhp	rpm
	287	385	1800-2100	310	415	1800-2100	328	440	1800-2100	354	475	1800-2100	388	520	1800-2100

C13 ACERT Power Unit Ratings In-Line 6

TA (ATAAC)	A Rating (Continuous)			B Rating			C Rating (Intermittent)		
	bkW	bhp	rpm	bkW	bhp	rpm	bkW	bhp	rpm
	287	385	1800-2100	310	415	1800-2100	328	440	1800-2100

Features

- ADEM™ A4 ECU
- MEUI fuel system
- Single-piece cross flow cylinder head
- High pressure fuel system
- Mono steel piston
- Leak-free technology
- Single/dual rear PTO
- Multi-layer steel head gaskets

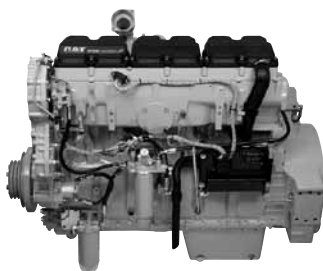
Benefits

- Gear train is redesigned with increased capacity and decreasing noise volume
- Option of laminated front housing significantly diminishes decibel output
- Oil pan isolation reduces noise volume
- Multi-layered steel hard gasket improves durability
- Steel spacer between two layers of spring steel increases gasket resilience
- Gasket resilience increases engine life by decreasing leakage
- New highly efficient oil filter reduces engine wear and enhances contamination control

Abbreviations used:

ATAAC.....Air-to-Air Aftercooled **TA**..... Turbocharged-Aftercooled
ECU.....Electronic Control Unit

Available using EPA (U.S.) Flexibility and EU Flexibility, and for other global regulated and non-regulated areas.



C15 ACERT

Specifications

	C15 ACERT
Bore x Stroke	137.2 x 171.4 mm (5.4 x 6.75 in)
Displacement	15.2 liters (927.56 in ³)
Ship Weight	1469 kg (3239 lbs)
Approximate Dimensions:	
Length	1377 mm (54.2 in)
Width	926 mm (36.5 in)
Height	1226 mm (48.3 in)

C15 ACERT Ratings In-Line 6

TA (ATAAC)	A Rating (Continuous)			B Rating			C Rating (Intermittent)			D Rating			E Rating		
	bkW	bhp	rpm	bkW	bhp	rpm	bkW	bhp	rpm	bkW	bhp	rpm	bkW	bhp	rpm
	328	440	1800-2100	354	475	1800-2100	403	540	1800-2100	433	580	1800-2100	444	595	1800-2100

C15 ACERT Power Unit Ratings In-Line 6

TA (ATAAC)	A Rating (Continuous)			B Rating			C Rating (Intermittent)		
	bkW	bhp	rpm	bkW	bhp	rpm	bkW	bhp	rpm
	328	440	1800-2100	354	475	1800-2100	403	540	1800-2100

Features

- ADEM™ A4 ECU
- MEUI fuel system
- Single-piece cross flow cylinder head
- High pressure fuel system
- Mono steel piston
- Leak-free technology
- Single/dual rear PTO
- Multi-layer steel head gaskets

Benefits

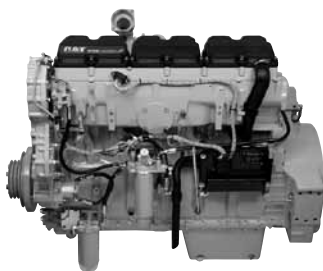
- Gear train is redesigned with increased capacity and decreasing noise volume
- Option of laminated front housing significantly diminishes decibel output
- Multi-layered steel hard gasket improves durability
- Steel spacer between two layers of spring steel increases gasket resilience
- Gasket resilience increases engine life by decreasing leakage
- New highly efficient oil filter reduces engine wear and enhances contamination control

Abbreviations used:

ATAAC.....Air-to-Air Aftercooled **TA**..... Turbocharged-Aftercooled
ECU.....Electronic Control Unit

Available using EPA (U.S.) Flexibility and EU Flexibility, and for other global regulated and non-regulated areas.

C18 ACERT



Specifications

	C18 ACERT
Bore x Stroke	145 x 183 mm (5.71 x 7.2 in)
Displacement	18.1 liters (1104.53 in ³)
Ship Weight	1673 kg (3688 lbs)

Approximate Dimensions:

Length	1388 mm (54.6 in) (T)
	1414.1 mm (55.7 in) (TTA)
Width	921 mm (36.3 in) (TA)
	974.0 mm (38.3 in) (TTA)
Height	1243 mm (48.9 in) (TA)
	1257 mm (49.5 in) (TTA)

C18 ACERT Ratings In-Line 6

A Rating (Continuous)			B Rating			C Rating (Intermittent)			D Rating			E Rating		
bkW	bhp	rpm	bkW	bhp	rpm	bkW	bhp	rpm	bkW	bhp	rpm	bkW	bhp	rpm
TA (ATAAC)														
429	575	1800-2100	447.5	600	1800-2100	470	630	1800-2100	—	—	—	—	—	—
TTA (ATAAC)														
—	—	—	—	—	—	522	700	1800-2100	571	765	1800-2100	597	800	1800-2100

C18 ACERT Power Unit Ratings In-Line 6

A Rating (Continuous)			B Rating			C Rating (Intermittent)		
bkW	bhp	rpm	bkW	bhp	rpm	bkW	bhp	rpm
TA (ATAAC)								
429	575	1800-2100	447.5	600	1800-2100	470	630	1800-2100
TTA (ATAAC)								
—	—	—	—	—	—	522	700	1800-2100

Features

- ADEM™ A4 ECU
- MEUI fuel system
- Twin parallel turbocharger on 700 horsepower and above
- Best in power class density
- Monotherm piston
- Unique twin parallel turbo design providing superb response with low fuel consumption
- Fuel efficiency gives savings in operating costs and cleaner air
- MEUI fuel system is highly reliable due to its design and volume of units active in the market

Benefits

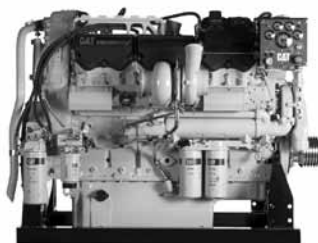
- Narrow rings of monotherm piston and tighter tolerance allows superior control
- New connecting rods allow for better retention and clamping force

Abbreviations used:

ATAAC.....Air-to-Air Aftercooled
ECU.....Electronic Control Unit

TA.....Turbocharged-Aftercooled
TTA.....Twin Turbocharged-Aftercooled

Ratings below 560 bkW (751 bhp) available using EPA (U.S.) Flexibility and EU Flexibility, and for other global regulated and non-regulated areas. Ratings above 560 bkW (751 bhp) available using EPA (U.S.) Flexibility and for other global regulated and non-regulated areas.



C32 ACERT

Specifications

	C27 ACERT	C32 ACERT
Bore x Stroke	137.2 x 152.4 mm (5.4 x 6.0 in)	145.0 x 162 mm (5.71 x 6.38 in)
Displacement	27 liters (1648 in ³)	32.1 liters (1959 in ³)
Ship Weight	2946 kg (6495 lbs)	2946 kg (6495 lbs)
Approximate Dimensions:		
Length	1917 mm (75.5 in)	1917 mm (75.5 in)
Width	1464 mm (57.6 in)	1479 mm (58.2 in)
Height	1321 mm (52 in)	1319 mm (51.9 in)

C27 ACERT Ratings V-12

A Rating (Continuous)	B Rating	C Rating* (Intermittent)	D Rating	E Rating
bkW bhp rpm	bkW bhp rpm	bkW bhp rpm	bkW bhp rpm	bkW bhp rpm
TA (ATAAC)				
597 800 1800- 2100	653 875 1800- 2100	708 950 1800- 2100	783 1050 1800- 2100	858 1150 1800- 2100

C32 ACERT Ratings V-12

A Rating	B Rating	C Rating (Intermittent)	D Rating	E Rating
bkW bhp rpm	bkW bhp rpm	bkW bhp rpm	bkW bhp rpm	bkW bhp rpm
TA (ATAAC)				
— — —	708 950 1800- 2100	839 1125 1800- 2100	895 1200 1800- 2100	1007 1350 1800- 2100

Features

- ADEM™ A4 ECU
- MEUI fuel system
- Leverage technology from the 3412E, C15 ACERT, and C18 ACERT
- Rear gear train
- Overhead cams
- Front housing and gear train

Benefits

- Excellent fuel efficiency and power density
- Wide power range from a single installation (from 800-1350 bhp)
- More production from same size package
- Improved cold start capability

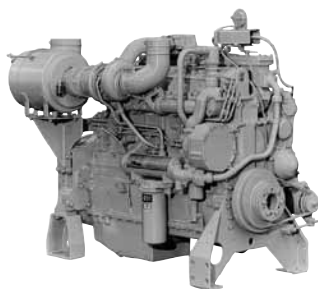
Abbreviations used:

- ATAAC**.....Air-to-Air Aftercooled
- ECU**.....Electronic Control Unit
- TA**.....Turbocharged-Aftercooled

Available using EPA (U.S.) Flexibility, and for other global regulated and non-regulated areas.

*Available in rear turbo configuration. Dimensions will vary.

3406C



Specifications

	3406C
Bore x Stroke	137.2 x 165.1 mm (5.4 x 6.5 in)
Displacement	14.6 liters (893 in ³)
Ship Weight	1300 kg (2866 lbs)
Approximate Dimensions:	
Length	1660 mm (65.35 in)
Width	906 mm (35.67 in)
Height	1335 mm (52.56 in)

3406C Ratings In-Line 6

Irrigation Rating			C Rating (Intermittent)			D Rating		
bkW	bhp	rpm	bkW	bhp	rpm	bkW	bhp	rpm
TA								
269	361	1800	298	400	1800	347	465	1800
306.5	411	1800	328	440	2000	—	—	—
—	—	—	343	460	2000	—	—	—

Features

- In-line, six cylinder diesel engine
- Heat-treated crankshaft with high fatigue strength regrounds up to 3 times
- Chrome-plated stems guard against seizure
- Direct injection fuel system
- Durable for heavy-duty applications

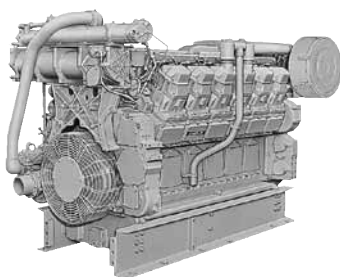
Benefits

- Hard-faced intake and exhaust valves resist wear at high heat
- High strength-to-wear ratio
- Steel spacer between head and block eliminates need for liner counterbores, enhancing strength and fatigue life of the block
- Valves rotate 3 degrees each lift, assuring good seating and uniform temperature distribution

Abbreviations used:

TA.....Turbocharged-Aftercooled

Available for global non-regulated areas.



3512

Specifications

	3508	3512
Bore x Stroke	170 x 190 mm (6.7 x 7.5 in)	170 x 190 mm (6.7 x 7.5 in)
Displacement	34.5 liters (2105 in ³)	51.8 liters (3158 in ³)
Ship Weight	4309 kg (9500 lbs)	6078 kg (13 400 lbs)
Approximate Dimensions:		
Length	2136 mm (84 in)	2676 mm (105 in)
Width	1703 mm (67 in)	1703 mm (67 in)
Height	1720 mm (68 in)	1720 mm (68 in)

	3516
Bore x Stroke	170 x 190 mm (6.7 x 7.5 in)
Displacement	69 liters (4210 in ³)
Ship Weight	7484 kg (16 499 lbs)
Approximate Dimensions:	
Length	3366 mm (133 in)
Width	1703 mm (67 in)
Height	1718 mm (68 in)

3508 Ratings V-8

	A Rating (Continuous)			C Rating (Intermittent)		
	bkW	bhp	rpm	bkW	bhp	rpm
TA	<hr/>					
	507	680	1200	612	820	1300
	578	775	1800	634	850	1800
	638	855	1800	746	1000	1800

3512 Ratings V-12

	A Rating (Continuous)			C Rating (Intermittent)		
	bkW	bhp	rpm	bkW	bhp	rpm
TA	<hr/>					
	761	1020	1200	858	1150	1300
	877	1175	1800	1007	1350	1800
	955	1280	1800	1119	1500	1800

3516 Ratings V-16

	A Rating (Continuous)			C Rating (Intermittent)		
	bkW	bhp	rpm	bkW	bhp	rpm
TA	<hr/>					
	1011	1355	1200	1242	1665	1300
	1156	1550	1800	1268	1700	1800
	1275	1710	1800	1492	2000	1800

Features

- Built with common parts — intake and exhaust valves, valve seat inserts, and valve springs are all identical
- Scroll-type unit injectors for consistent, precise fuel delivery to each cylinder
- High-pressure fuel lines eliminated
- Advanced electronic control systems

Benefits

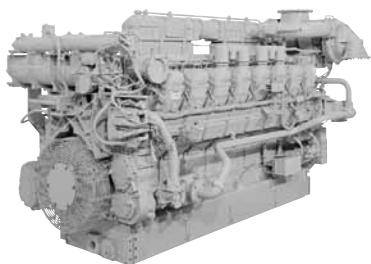
- Service efficiency reduces operating costs
- Superior fuel economy
- Repower savings/higher production with less fuel consumption

Abbreviations used:

TA.....Turbocharged-Aftercooled

Available for global non-regulated areas.

3516B



Specifications

	3508B	3512B
Bore x Stroke	170 x 190 mm (6.7 x 7.5 in)	170 x 190 mm (6.7 x 7.5 in)
Displacement	34.5 liters (2105 in ³)	51.8 liters (3158 in ³)
Ship Weight	4309 kg (9500 lbs)	6078 kg (13 400 lbs)
Approximate Dimensions:		
Length	2462 mm (97 in)	3067 mm (120.8 in)
Width	1703 mm (67 in)	1785 mm (70.3 in)
Height	1720 mm (68 in)	1806 mm (71.1 in)

	3512C	3516B
Bore x Stroke	170 x 190 mm (6.7 x 7.5 in)	170 x 190 mm (6.7 x 7.5 in)
Displacement	51.8 liters (3158 in ³)	69 liters (4210 in ³)
Ship Weight	6078 kg (13 400 lbs)	7484 kg (16 500 lbs)
Approximate Dimensions:		
Length	3067 mm (120.8 in)	3008 mm (119 in)
Width	1785 mm (70.3 in)	1443 mm (57 in)
Height	1806 mm (71.1 in)	1980 mm (78 in)

Mobile Equipment Ratings

3508B Ratings V-8

	A Rating (Continuous)			C Rating (Intermittent)		
	bkW	bhp	rpm	bkW	bhp	rpm
TA (SCAC)	746	1000	1800	820	1100	1800

3512B Ratings V-12

	A Rating (Continuous)			C Rating (Intermittent)		
	bkW	bhp	rpm	bkW	bhp	rpm
TA (SCAC)	1119	1500	1800	1231	1650	1800

3512C Ratings* V-12

	A Rating (Continuous)		
	bkW	bhp	rpm
TA (ATAAC)	1120	1500	1800

3516B Ratings V-16

	A Rating (Continuous)			C Rating (Intermittent)		
	bkW	bhp	rpm	bkW	bhp	rpm
TA (SCAC)	1492	2000	1800	1566	2100	1800

Features

- Built with common parts — intake and exhaust valves, valve seat inserts, and valve springs are all identical
- Scroll-type unit injectors for consistent, precise fuel delivery to each cylinder
- High-pressure fuel lines eliminated
- Advanced electronic control systems

Benefits

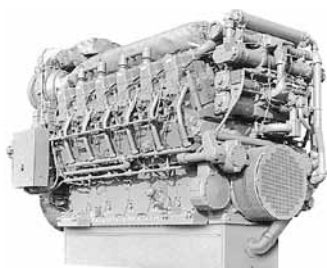
- Service efficiency reduces operating costs
- Superior fuel economy
- Repower savings/higher production with less fuel consumption

Abbreviations used:

SCAC Separate Circuit Aftercooled **ATAAC** Air-to-Air Aftercooled
TA Turbocharged-Aftercooled

Available for global regulated and non-regulated areas.

*Available using EPA (U.S.) Flexibility and for other global regulated and non-regulated areas.



3612

Specifications

	3606	3608
Bore x Stroke	280 x 300 mm (11 x 11.8 in)	280 x 300 mm (11 x 11.8 in)
Displacement	110.8 liters (6764 in ³)	147.8 liters (9018 in ³)
Ship Weight	15 680 kg (34 500 lbs)	19 000 kg (41 800 lbs)
Approximate Dimensions:		
Length	3988 mm (157 in)	4828 mm (190 in)
Width	1748 mm (69 in)	1748 mm (69 in)
Height	2626 mm (103 in)	2626 mm (103 in)

	3612	3616
Bore x Stroke	280 x 300 mm (11 x 11.8 in)	280 x 300 mm (11 x 11.8 in)
Displacement	221.7 liters (13 527 in ³)	295.6 liters (18 036 in ³)
Ship Weight	25 140 kg (55 300 lbs)	29 950 kg (65 900 lbs)
Approximate Dimensions:		
Length	4562 mm (180 in)	5482 mm (216 in)
Width	1704 mm (67 in)	1704 mm (67 in)
Height	3231 mm (127 in)	3231 mm (127 in)

3606 Ratings In-Line 6

TA	Distillate A Rating (Continuous)		
	bkW	bhp	rpm
	1490	1998	750
	1560	2092	800
	1730	2319	900
	1850	2481	1000

3608 Ratings In-Line 8

TA	Distillate A Rating (Continuous)		
	bkW	bhp	rpm
	1980	2655	750
	2080	2787	800
	2300	3080	900
	2460	3300	1000

3612 Ratings V-12

TA	Distillate A Rating (Continuous)		
	bkW	bhp	rpm
	2980	3996	750
	3120	4184	800
	3460	4640	900
	3700	4962	1000

3616 Ratings V-16

TA	Distillate A Rating (Continuous)		
	bkW	bhp	rpm
	3960	5310	750
	4160	5579	800
	4600	6169	900
	4920	6598	1000

Features

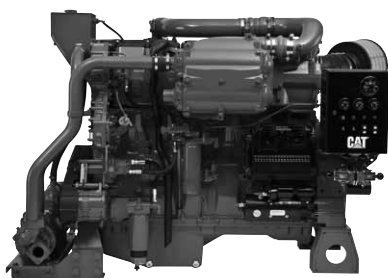
- All 900 and 1000 ratings are IMO certified with 32°C cooling water to aftercooler

Abbreviations used:

TA.....Turbocharged-Aftercooled

Available for global non-regulated areas.

C18 ACERT Fire Pump Engine



Specifications

	C18 ACERT
Bore x Stroke	145 x 183 mm (5.71 x 7.2 in)
Displacement	18.1 liters (1104.53 in ³)
Ship Weight	1953 kg (4306 lbs)
Approximate Dimensions:	
Length	1889 mm (74.4 in)
Width	1081.7 mm (42.6 in)
Height	1379.6 mm (54.3 in)

C18 ACERT Ratings In-Line 6

1500 rpm		1750 rpm		1900 rpm		2100 rpm	
bkW	bhp	bkW	bhp	bkW	bhp	bkW	bhp
Tier 2							
—	—	597	800	597	800	597	800
Tier 3							
—	—	522	700	522	700	522	700
—	—	447	600	447	600	447	600
Non-EPA Certified							
522	700	—	—	—	—	—	—

Features

- ADEM A4 ECU — two redundant units per NFPA 20
- MEUI fuel system
- Compact design
- Twin parallel turbochargers with watercooled center sections
- Monotherm piston

Benefits

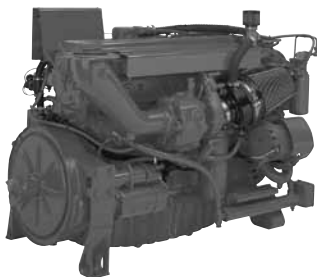
- Narrow rings of monotherm piston and tighter tolerance allows superior control
- Watercooled center sections of turbocharger increase reliability during hot shutdowns
- One compact design fits 600-800 hp range

Abbreviations used:

ECU.....Electronic Control Unit

All ratings are FM approved and UL listed.

Ratings below 560 kW (751 hp) conform with current EPA (U.S.) Tier 3 emission standards for stationary emergency fire pump engines. Ratings above 560 kW (751 hp) conform with current EPA (U.S.) Tier 2 emission standards for stationary emergency fire pump engines.



**Fire Pump
Engine**

3406C Ratings In-Line 6

1750 rpm		2100 rpm		2300 rpm	
bkW	bhp	bkW	bhp	bkW	bhp
TA					
313	420	321	430	339	455
343	460	359	482	—	—

3412C* Ratings V-12

1750 rpm		1900 rpm		2100 rpm	
bkW	bhp	bkW	bhp	bkW	bhp
T					
401	538	—	—	427	573
TA					
476	638	551	739	551	739

3512 Ratings V-12

1460 rpm		1750 rpm	
bkW	bhp	bkW	bhp
TA			
1067	1430	1193	1600

3508 Ratings V-8

1460 rpm		1750 rpm	
bkW	bhp	bkW	bhp
TA			
709	950	794	1065

3516 Ratings V-16

1460 rpm		1750 rpm	
bkW	bhp	bkW	bhp
TA			
1417	1900	1480	1985

Abbreviations used:

TTurbocharged

TATurbocharged-Aftercooled

*Watercooled turbocharger and manifolds
Available for global non-regulated areas.

Label and NSPS Regulations for Gas Engines

Stationary Use Only Label

- Effective January 2004, the U.S. EPA Non-road Mobile SI rule restricts the use of SI gas engines within the United States. Cat gas engines are not certified for mobile applications within the U.S. and are to be used in stationary use only applications that must be installed a minimum of twelve consecutive months at a location.

U.S. EPA SI Stationary NSPS Regulations

- Effective July 2007, the U.S. EPA will enforce the new Spark Ignited New Source Performance Standard (SI NSPS) for stationary engines rated equal to or above 500 bhp.
- Effective January 1, 2008, this standard will be required for engines rated below 500 bhp.

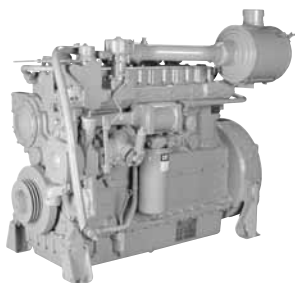
U.S. EPA SI Stationary NSPS Non-air Fuel Ratio Site Compliant Capable

- The as-shipped non-air fuel ratio-controlled engine is capable of site-compliance by the customer and will require customer-specified and -supplied 3-way catalyst and air-fuel ratio control.
- This designation is used to describe rich burn catalyst emission ratings intended for use with 3-way catalysts.
- It is the customer's responsibility to coordinate and complete site emissions testing to demonstrate compliance to the NSPS.

The above regulations apply to the gas engines on pages 27-30.

Abbreviations

NSPS.....	New Source Performance Standard
SI	Spark Ignited
SI NSPS	Spark Ignited New Source Performance Standard



G3306

Specifications

	G3304 (TA)	G3306 (T)
Bore x Stroke	121 x 152 mm (4.75 x 6.0 in)	121 x 152 mm (4.75 x 6.0 in)
Displacement	7.0 liters (425 in ³)	10.5 liters (638 in ³)
Ship Weight	739 kg (1630 lbs)	948 kg (2090 lbs)
Approximate Dimensions:		
Length	1158 mm (46 in)	1505 mm (59 in)
Width	744 mm (29 in)	1208 mm (48 in)
Height	1270 mm (50 in)	978 mm (39 in)

G3304 Ratings

Engine — Continuous	1800 rpm	
	bkW	bhp
G3304 NA	71	95

G3306 Ratings

Engine — Continuous	1800 rpm	
	bkW	bhp
G3306 NA*	108	145
G3306 T**	111	150
G3306 TA^{2*}	151	203
G3306 TA¹	157	211
G3306 TA^{1*}	164	220

¹32°C/90°F Water to Aftercooler

²54°C/130°F Water to Aftercooler

Gas Engine Features

- ADEM™ A3 ECU
- Over five decades of experience leveraging Caterpillar quality engineering and manufacturing of gas and diesel powered engines
- Fuel flexibility
- Open-chamber design

Gas Engine Benefits

- Natural, field, landfill, and propane gas can all be burned efficiently
- Conforms with latest worldwide emission standards
- Caterpillar engineered design expertise has been applied
- Open-chamber design keeps the air-fuel mixture lean and increases power while minimizing NOx
- Naturally aspirated, turbocharged, and aftercooled options allow you to match emissions and dependability requirements to your specific needs

Abbreviations used:

ECU.....Electronic Control Unit

NA.....Naturally Aspirated

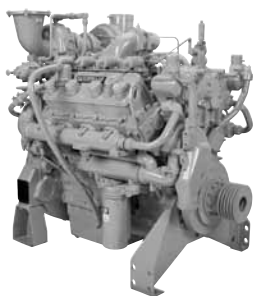
TA.....Turbocharged-Aftercooled

Ratings listed are for 25°C (77°F) ambient temperature, 500 ft. altitude, and pipeline quality gas.

*Ag rating also available

**Ag rating only

G3408



Specifications

	G3406 (TA)	G3408 (TA)	G3412 (TA)
Bore x Stroke ...	137 x 165 mm (5.4 x 6.5 in)	137 x 152 mm (5.4 x 6.0 in)	137 x 152 mm (5.4 x 6.0 in)
Displacement ...	14 liters (893 in ³)	18 liters (1099 in ³) ..	27 liters (1649 in ³)
Ship Weight	1362 kg (3000 lbs) ...	1680 kg (3700 lbs) ..	2143 kg (4720 lbs)
Approximate Dimensions:			
Length	1993 mm (79 in).....	1594 mm (63 in)	2049 mm (81 in)
Width	1265 mm (50 in).....	1471 mm (58 in)	1603 mm (63 in)
Height	1433 mm (56 in).....	1509 mm (59 in)	1734 mm (68 in)

G3406 Ratings

	1400 rpm		1800 rpm	
	bkW	bhp	bkW	bhp
Engine — Continuous				
G3406 NA	131	175	160	215
G3406 TA^{2,4}	—	—	206	276
G3406 TA	—	—	242	325

G3408 Ratings

	1500 rpm		1800 rpm	
	bkW	bhp	bkW	bhp
Engine — Continuous				
G3408 NA	—	—	190	255
G3408 TA²	—	—	298	400
G3408 TA^{2,4}	248	332	—	—
G3408 TA^{2,3}	—	—	317	425

G3412 Ratings

	1500 rpm		1800 rpm	
	bkW	bhp	bkW	bhp
Engine — Continuous				
G3412 NA	—	—	272	365
G3412 TA^{2,4}	373	500	—	—
G3412C TA^{2,3}	—	—	475	637

¹32°C/90°F Water to Aftercooler

²54°C/130°F Water to Aftercooler

³Low Emissions

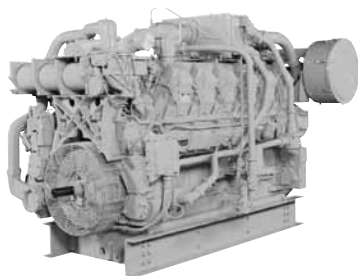
⁴Catalyst Rating

Ratings listed are for 25°C (77°F) ambient temperature, 500 ft. altitude, and pipeline quality gas.

Abbreviations used:

NA.....Naturally Aspirated

TA.....Turbocharged-Aftercooled



G3512

Specifications

	G3508 (TA)	G3512 (T)
Bore x Stroke	170 x 190 mm (6.7 x 7.5 in)	170 x 190 mm (6.7 x 7.5 in)
Displacement	34.5 liters (2105 in ³)	51.8 liters (3158 in ³)
Ship Weight	5425 kg (11 950 lbs)	6560 kg (14 450 lbs)
Approximate Dimensions:		
Length	2247 mm (89 in)	2788 mm (110 in)
Width	1733 mm (68 in)	1703 mm (67 in)
Height	1867 mm (74 in)	1863 mm (73 in)

	G3516 (TA)	G3520B (TA)
Bore x Stroke	170 x 190 mm (6.7 x 7.5 in)	170 x 190 mm (6.7 x 7.5 in)
Displacement	69.0 liters (4211 in ³)	86.3 liters (5263 in ³)
Ship Weight	7931 kg (17 470 lbs)	9875 kg (21 770 lbs)
Approximate Dimensions:		
Length	3327 mm (131 in)	3849 mm (152 in)
Width	1703 mm (67 in)	1718 mm (68 in)
Height	1859 mm (73 in)	2398 mm (94 in)

G3508 Ratings

	1200 rpm		1400 rpm	
	bkW	bhp	bkW	bhp
Engine — Continuous				
G3508 TA³	391	524	—	—
G3508 TA^{1,4}	—	—	500	670

G3516 Ratings

	1200 rpm		1400 rpm	
	bkW	bhp	bkW	bhp
Engine — Continuous				
G3516 NA	492	660	—	—
G3516³	783	1050	—	—
G3516 TA^{3,4,5}	858	1150	1000	1340

G3512 Ratings

	1200 rpm		1400 rpm	
	bkW	bhp	bkW	bhp
Engine — Continuous				
G3512 TA³	589	790	—	—
G3512 TA^{3,4,5}	642	860	749	1005

G3520B Ratings

	1200 rpm		1400 rpm	
	bkW	bhp	bkW	bhp
Engine — Continuous				
G3520B TA	1103	1480	1286	1725

- ¹32°C/90°F Water to Aftercooler
- ²43°C/110°F Water to Aftercooler
- ³54°C/130°F Water to Aftercooler
- ⁴Low Emissions
- ⁵Air Fuel Ratio

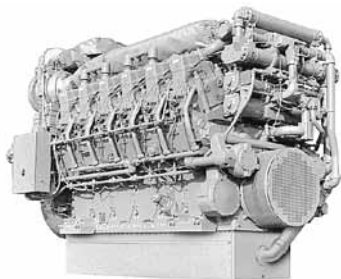
Ratings listed are for 25°C (77°F) ambient temperature, 500 ft. altitude, and pipeline quality gas.

Abbreviations used:

ECU Electronic Control Unit
NA Naturally Aspirated

TA Turbocharged-Aftercooled

G3612



Specifications

	G3606 (TA)	G3608 (TA)
Bore x Stroke	300 x 300 mm (11.8 x 11.8 in)	300 x 300 mm (11.8 x 11.8 in)
Displacement	127.2 liters (37 762 in ³)	169.6 liters (10 350 in ³)
Ship Weight	15 640 kg (34 560 lbs)	19 000 kg (41 888 lbs)
Approximate Dimensions:		
Length	4638 mm (183 in)	5465 mm (215 in)
Width	1744 mm (69 in)	1868 mm (74 in)
Height	2921 mm (115 in)	2922 mm (115 in)

	G3612 (TA)	G3616 (TA)
Bore x Stroke	300 x 300 mm (11.8 x 11.8 in)	300 x 300 mm (11.8 x 11.8 in)
Displacement	254.4 liters (15 528 in ³)	339.2 liters (20 698 in ³)
Ship Weight	25 084 kg (55 300 lbs)	29 892 kg (65 900 lbs)
Approximate Dimensions:		
Length	4735 mm (186 in)	5661 mm (223 in)
Width	2380 mm (94 in)	2380 mm (94 in)
Height	3220 mm (127 in)	3208 mm (126 in)

G3606 Ratings

	1000 rpm	
	bkW	bhp
Engine — Continuous		
G3606 TA^{2,3}	1324	1775

G3608 Ratings

	1000 rpm	
	bkW	bhp
Engine — Continuous		
G3608 TA^{2,3}	1767	2370

G3612 Ratings

	1000 rpm	
	bkW	bhp
Engine — Continuous		
G3612 TA^{2,3}	2647	3550

G3616 Ratings

	1000 rpm	
	bkW	bhp
Engine — Continuous		
G3616 TA^{2,3}	3531	4735

G12CM34 Ratings

	750 rpm	
	bkW	bhp
Engine — Continuous		
G12CM34³	4575	6135
G12CM34³	6100	8180

¹32°C/90°F Water to Aftercooler
²54°C/130°F Water to Aftercooler
³Low Emissions

Features

- Over 5 decades experience leveraging Caterpillar quality engineering and manufacturing of gas and diesel powered engines
- Fuel flexibility
- State-of-the-art electronically controlled pre-chamber design

Benefits

- Natural, field, landfill, and propane gas can all be burned efficiently
- Conforms with latest worldwide emission standards
- Caterpillar engineered design expertise has been applied
- Electronically controlled pre-chamber design allows you to obtain NOx levels as low as 0.5 gr/bhp-hr

Abbreviations used:

TA.....Turbocharged-Aftercooled

ACERT™ Technology

- A series of evolutionary, incremental improvements resulting in breakthrough engine technology
- Built on proven Cat systems and components
- Minimizes emissions through better control of the combustion process



ADEM™ A4 ECU

- Electronic engine control unit
- Precise fuel control
- Smarter controller
- Password protected
- Customized engine speed
- Controls idle levels
- Precise injection timing



Analog Gauge

- 12V and 24V systems
- Liquid Crystal Display: engine hours/diagnostic codes
- 2 LED indicators
- 2- or 3-inch diameter dial
- Thread nut mount installed
- Integral 6-pin Deutsch connector
- Displays engine speed, fuel rate, load percent, pressures, and temperatures



Cat® Messenger

- Electronic display unit
- Full graphic LCD screen
- Engine status and diagnostic display in one
- Four easy scroll buttons
- Monitors engine problems
- Alerts driver of corrective action
- Schedules engine for service
- Provides diagnostic information, SAE standard codes, and brief text explanation



For additional information visit www.catelectronics.com

Additional Literature

Cat C4.4, C4.4 ACERT, and C6.6 ACERT Engines Superior Performance and Beyond.....	LEDH6529
Industrial Engine Attachments Guide	LEDH6161
Industrial Power Systems Fueled by Innovation.....	LEDH4624
Irrigation Engine Ratings Guide	LEDH5378

Caterpillar. Your Local Resource. Worldwide.

Your Cat dealer is prepared to answer any questions you may have about Cat Power Systems, customer support, parts or service capability anywhere in the world. For the name and number of the Cat dealer nearest you, visit our website or contact Caterpillar Inc. World Headquarters in Peoria, Illinois, U.S.A.

World Headquarters:
Caterpillar Inc.
Peoria, Illinois, U.S.A.
Tel: (309) 578-6298
Fax: (309) 578-2559

Mailing Address:
Caterpillar Inc.
Industrial Power Systems
P.O. Box 610
Mossville, IL 61552

www.cat-industrial.com

E-mail: cat_power@cat.com

Materials and specifications are subject to change without notice. Rating ranges listed include the lowest and highest available for a specific engine or family of engines. Load factor and time at rated load and speed will determine the best engine/rating match.

LECH3874-11 (2-11)
©2011 Caterpillar
All rights reserved.

CAT, CATERPILLAR, their respective logos, ACERT, ADEM, HEUI, "Caterpillar Yellow" and the "Power Edge" trade dress, as well as corporate and product identity used herein, are trademarks of Caterpillar and may not be used without permission.

